

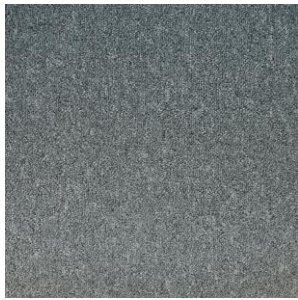


TECSOM 3580 CITY SQUARE

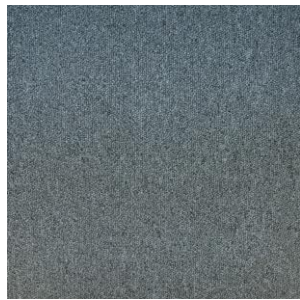
Made in France



00032 > Rho 17,7%



00033 > Rho 13,3%



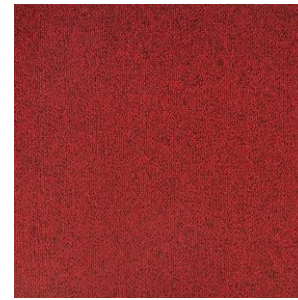
00035 > Rho 10,6%



00017 > Rho 6,1%



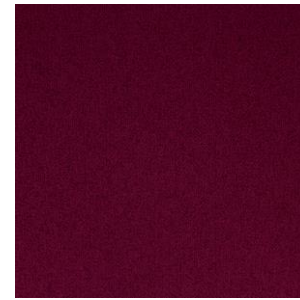
00018 > Rho 3,0%



00096 > Rho 5,1%



00097 > Rho 3,3%



00115 > Rho 6,5%



00123 > Rho 5,5%



00021 > Rho 11,0%



00023 > Rho 7,2%



00025 > Rho 5,0%



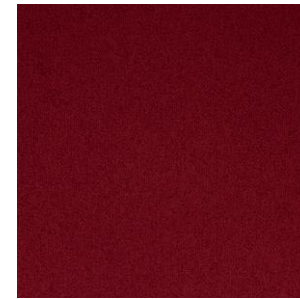
00027 > Rho 4,2%



00029 > Rho 3,2%



00106 > Rho 13,3%



00095 > Rho 6,1%



00062 > Rho 16,9%



00101 > Rho 20,8 %



00045 > Rho 6,3%



00074 > Rho 10,7%



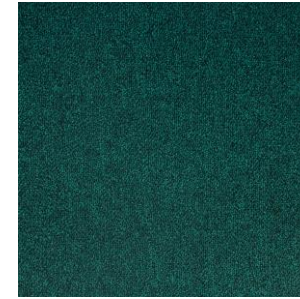
00047 > Rho 5,1%



00076 > Rho 8,8%



00081 > Rho 22.3%



00086 > Rho 6,2%







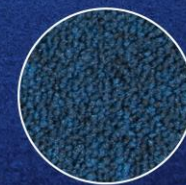
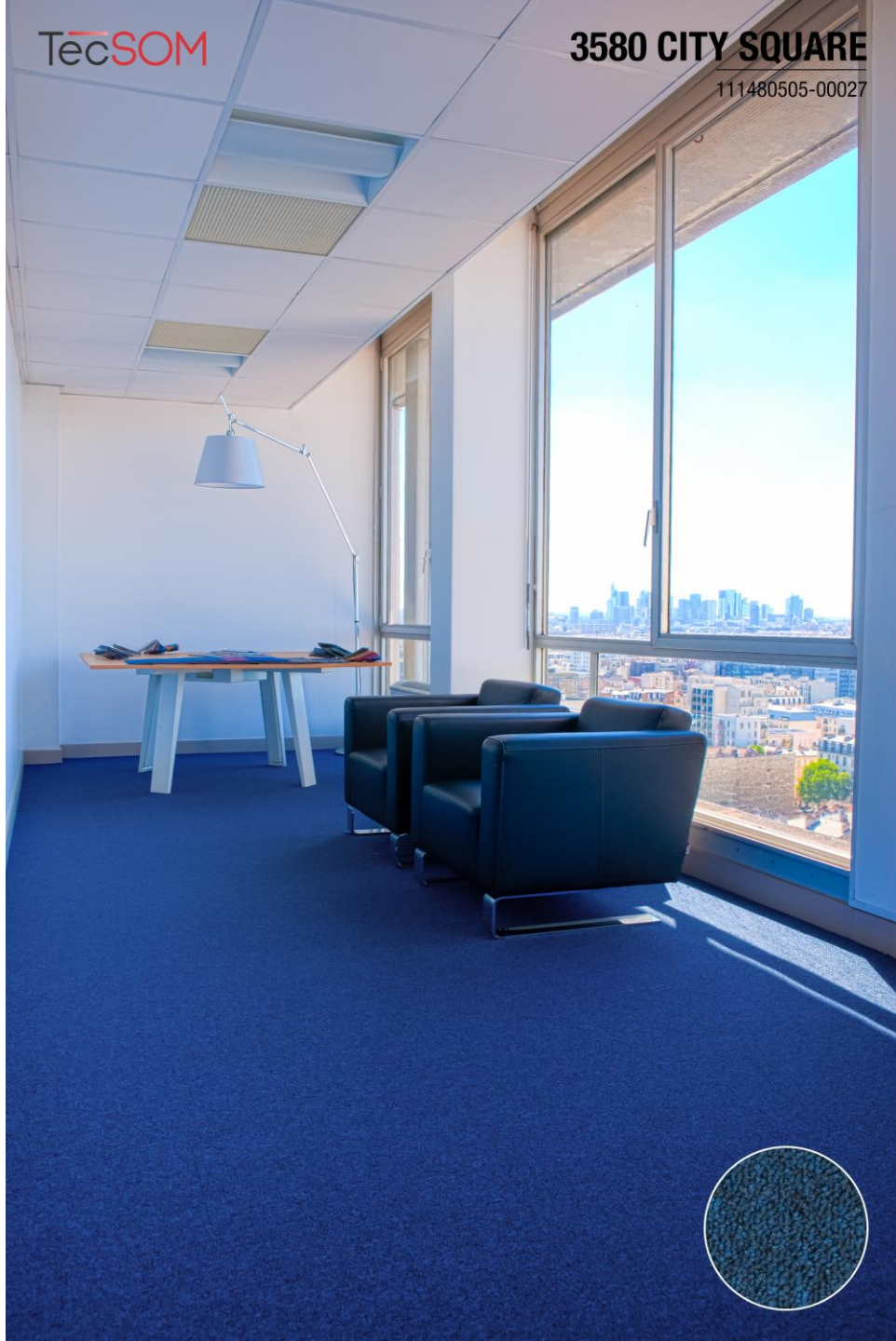
00032 > Rho 17,7%





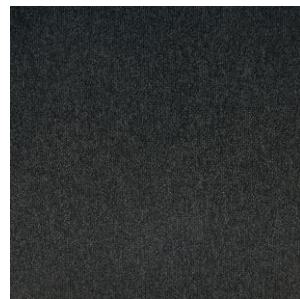
00062 > Rho 16,9%







00035 > Rho 10,6%



00018 > Rho 3,0%



00074 > Rho 10,7%



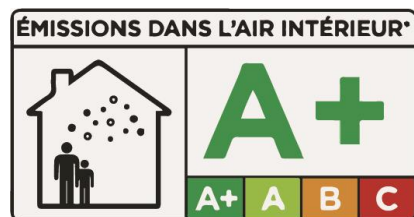
Caractéristiques	Tecsom 3580 City Square
Origine	France
Composition fil – Yarn	100% Polyamide teint masse – 100% Solution dyed Polyamide
Nature de l'envers – Backing	PVC 100% recyclé – 100% recycled PVC
Poids de fil – Weight of yarn	580 g/m ²
Epaisseur – Thickness	7,0 mm
Masse totale – Total weight	4395 g/m ²
Part recyclée – Recycled pourcentage	43% (+28% de matières naturelles) / 29% of natural materials
Résistance Feu – Fire rating	BflS1
Bruit de choc – Impact noise reduction	<0,10%
Absorption	7/8
Stabilité dimensionnelle – Dimensional stab.	27 dB
Résistance des couleurs – Colour fastness	$\alpha_w = 0,15$ (H)
Résistance électrostatique – Electrostatic res.	< 10 ¹⁰ Ω
Environnement – Environment	BRE – LEED - HQE

En quelques mots / In a few words...

Fabrication française (Sedan, Ardennes) / French production



- * Utilisation de fils teintés dans la masse / Use of solution dyed yarns.
- * Envers PVC avec voile de verre – Meilleure stabilité dimensionnelle du marché / Recycled PVC backing – Best dimensional market
- * Invisibilité des joints – Grande résistance au trafic / No seem visibility – High resistance to traffic
- * Facilité de pose et d'entretien – Easy to install and maintain
- * Processus de fabrication respectueux de l'environnement – Eco friendly process of production



LEED



Répond à la démarche

HQE

U3P3

