



TECSOM EVOLUTION

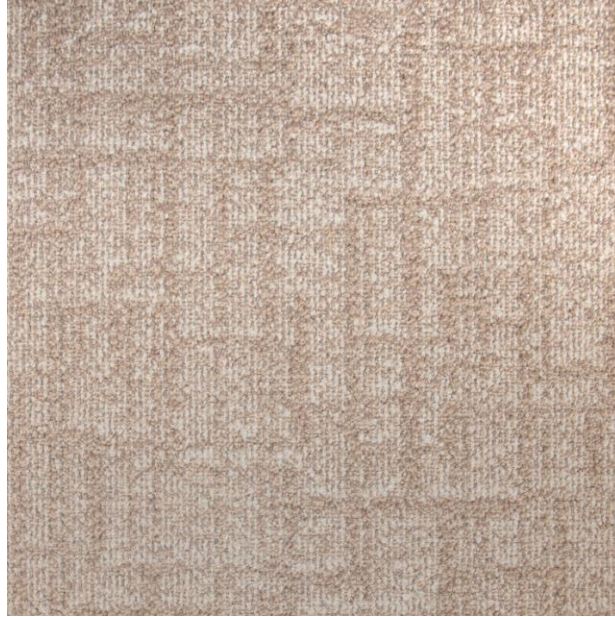


Made in france

Tecsom Evolution **E'Way** – Coloris en stock / Colours in stock



00201 > Rho 26,7%



00182 > Rho 24,1%



00039 > Rho 5,5%



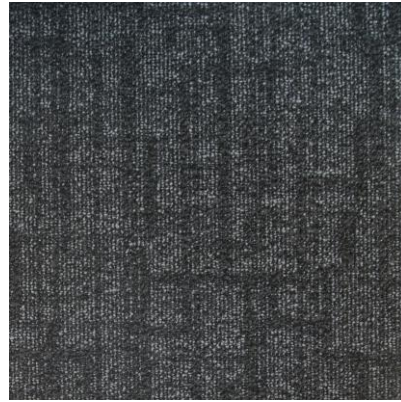
00204 > Rho 14,7%



00411 > Rho 7,1%



00411 > Rho 7,1%

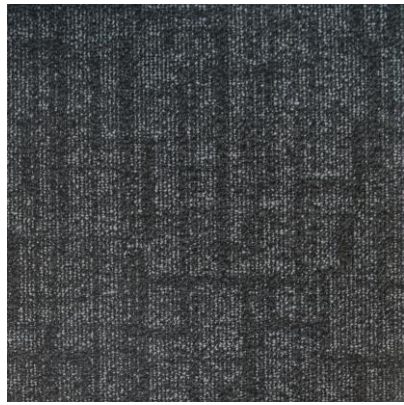


00039 > Rho 5,5%

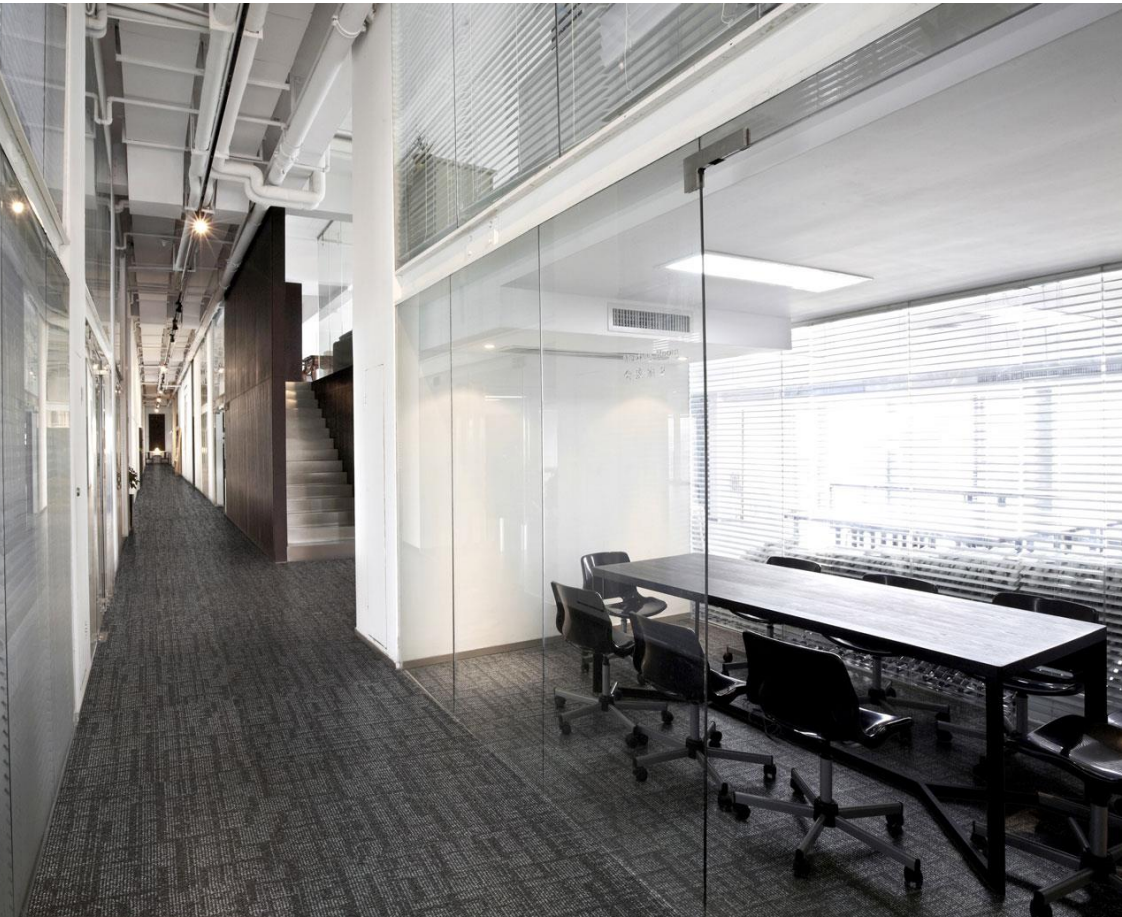


00182 > Rho 24,1%





00039 > Rho 5,5%



00204 > Rho 14,7%

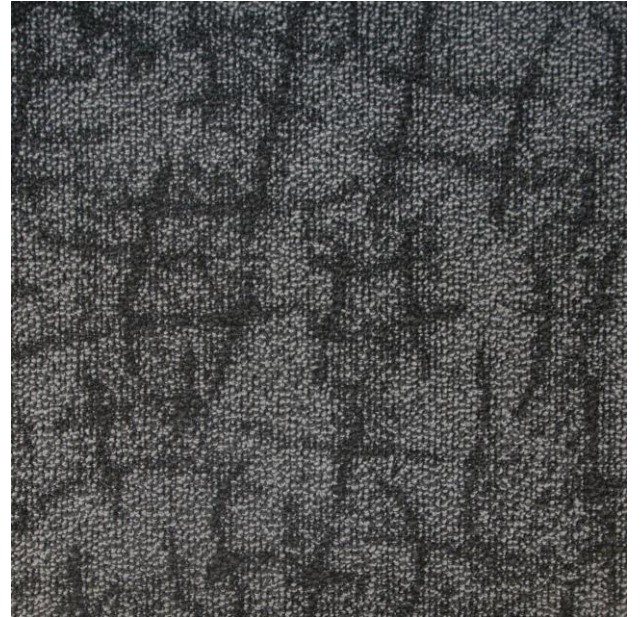
Tecsom Evolution **E'Clay** – Coloris en stock / Colours in stock



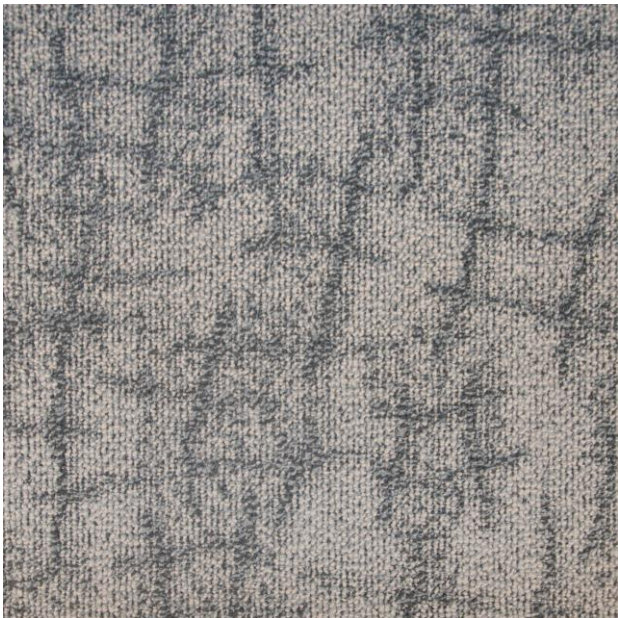
00201 > Rho 26,5%



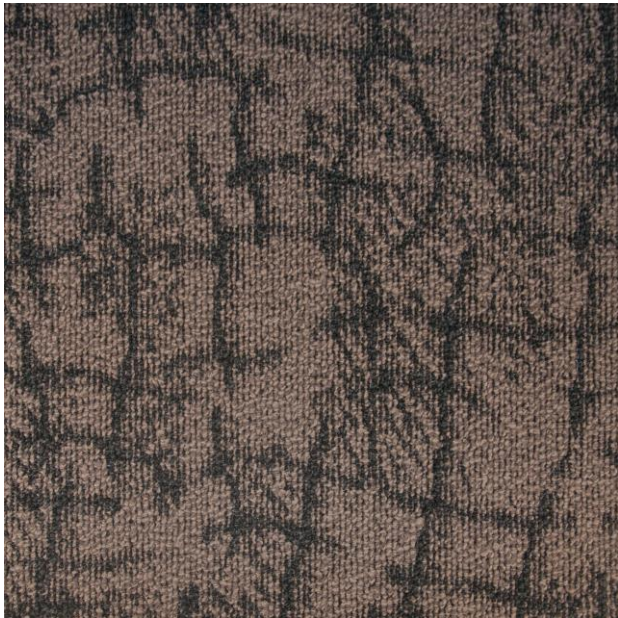
00310 > Rho 11,8%



00039 > Rho 7,3%



00204 > Rho 16,5%



00049 > Rho 7,8%



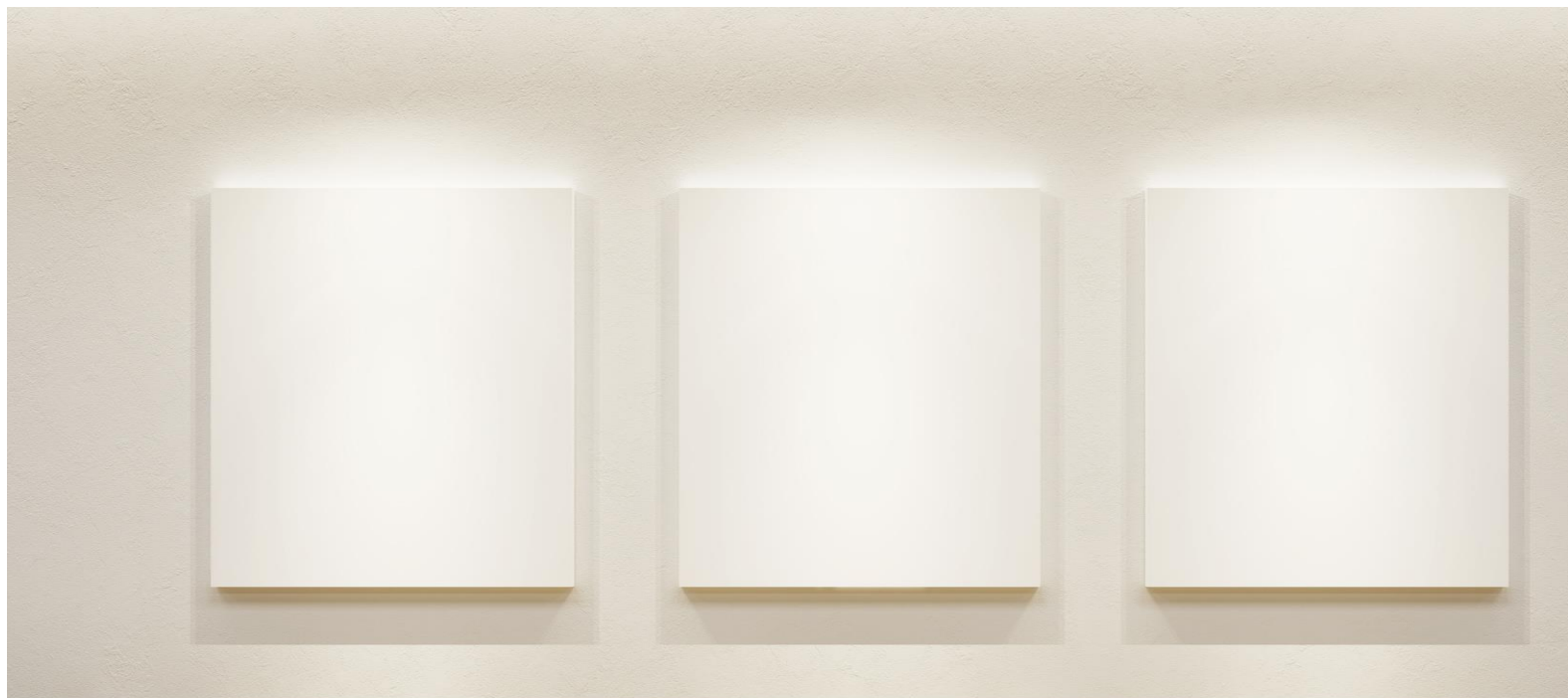
00145 > Rho 5,4%



00310 > Rho 11,8%



00204 > Rho 16,5%





00204 > Rho 16,5%



00201 > Rho 26,5%



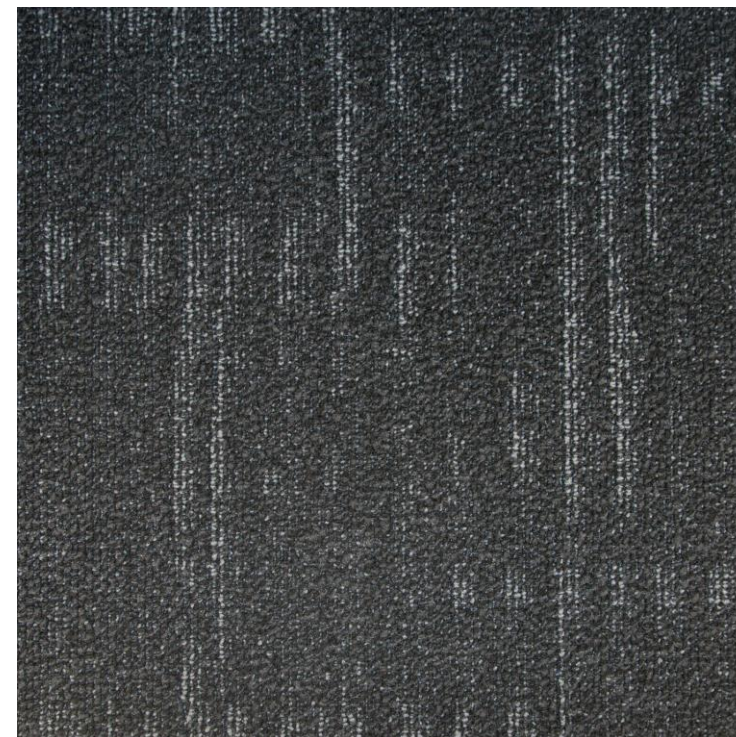
Tecsom Evolution **E'Scale** – Coloris en stock / Colours in stock



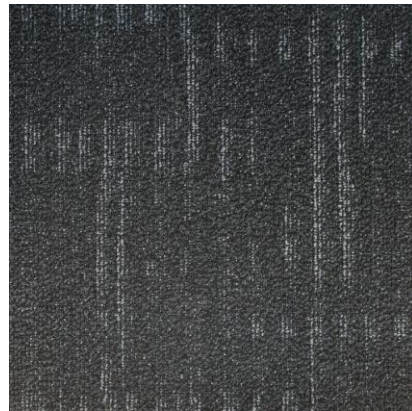
00201 > Rho 24,5%



00310 > Rho 11,6%



00144 > Rho 4,8%



00144 > Rho 4,8%



00310 > Rho 11,6%







00310 > Rho 11,6%

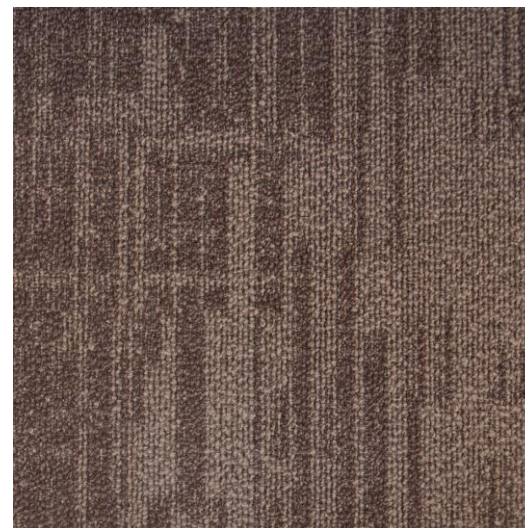
Tecsom Evolution **E'Line** – Coloris en stock / Colours in stock



00310 > Rho 13,6%



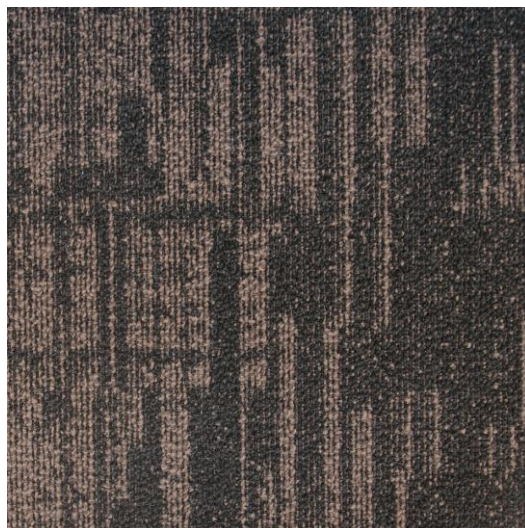
00204 > Rho 14,2%



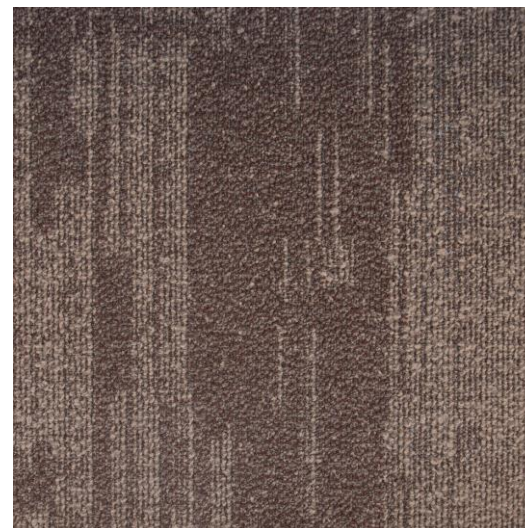
00411 > Rho 7,6%



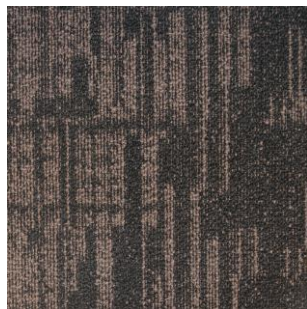
00049 > Rho 6,6%



00145 > Rho 6,1%



00195 > Rho 7,6%



00145 > Rho 6,1%

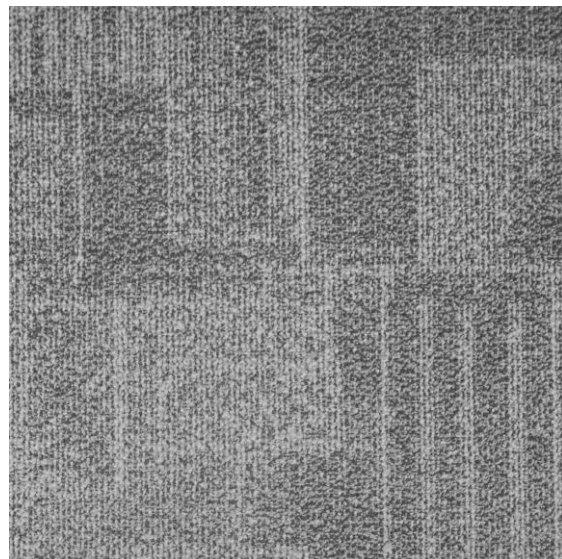


00310 > Rho 13,6%

Tecsom Evolution **E'Square** – Coloris en stock / Colours in stock



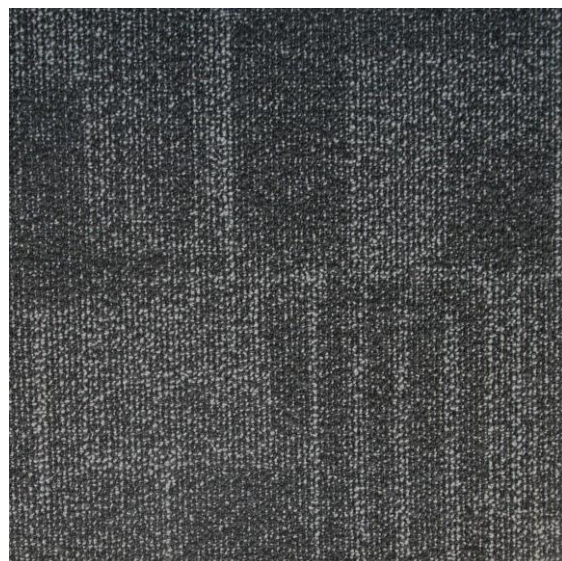
00201 > Rho 29,9%



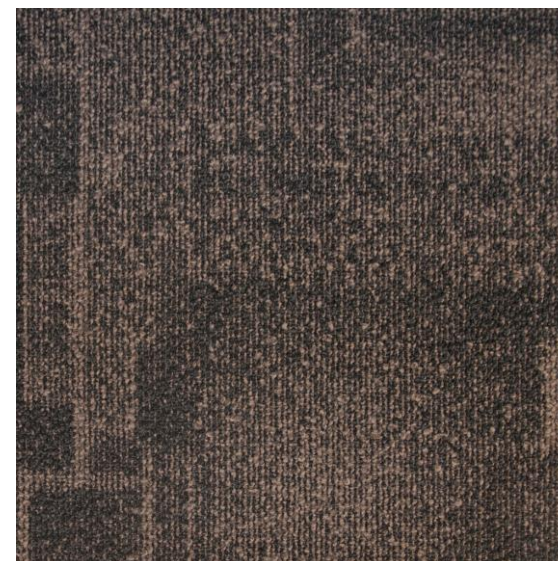
00310 > Rho 14,3%



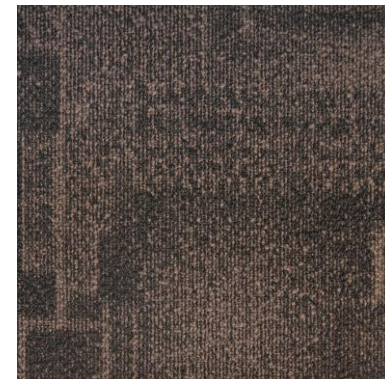
00171 > Rho 28,0%



00144 > Rho 6,2%



00145 > Rho 7,1%



00145 > Rho 7,1%



00171 > Rho 28,0%

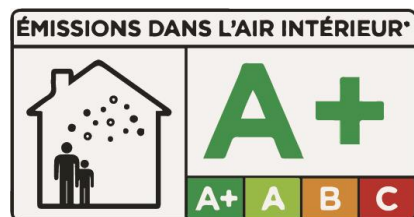
CARACTÉRISTIQUES	TECSOM EVOLUTION
ORIGINE	FRANCE
COMPOSITION FIL – YARN	100% POLYAMIDE TEINT MASSE – 100% SOLUTION DYED POLYAMIDE
NATURE DE L'ENVERS – BACKING	PVC 100% RECYCLÉ – 100% RECYCLED PVC
POIDS DE FIL – WEIGHT OF YARN	700 G/M ²
EPAISSEUR – THICKNESS	6,8 MM
MASSE TOTALE – TOTAL WEIGHT	4419 G/M ²
RÉSISTANCE FEU – FIRE RATING	BFLS1
BRUIT DE CHOC – IMPACT NOISE	<0,10%
ABSORPTION	7/8
STABILITÉ DIMENSIONNELLE –	24 DB
RÉSISTANCE DES COULEURS – COLOUR	$\alpha W = 0,15 (H)$
RÉSISTANCE ÉLECTROSTATIQUE –	$< 10^{10} \Omega$
ENVIRONNEMENT – ENVIRONMENT	BRE – LEED - HQE

EN QUELQUES MOTS / IN A FEW WORDS...



Fabrication française (Sedan, Ardennes) / French production

- * Utilisation de fils teintés dans la masse / Use of solution dyed yarns.
- * Envers PVC avec voile de verre - Meilleure stabilité dimensionnelle du marché / Recycled PVC backing - Best dimensional stability of the market
- * Invisibilité des joints - Grande résistance au trafic / No seem visibility - High resistance to traffic
- * Facilité de pose et d'entretien - Easy to install and maintain
- * Processus de fabrication respectueux de l'environnement - Eco friendly process of production



LEED



Répond à la démarche

HQE

